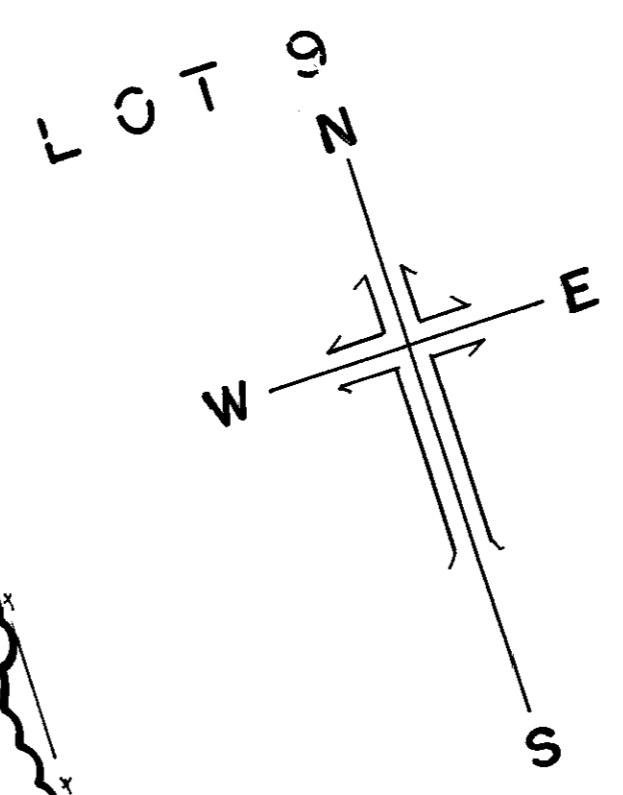
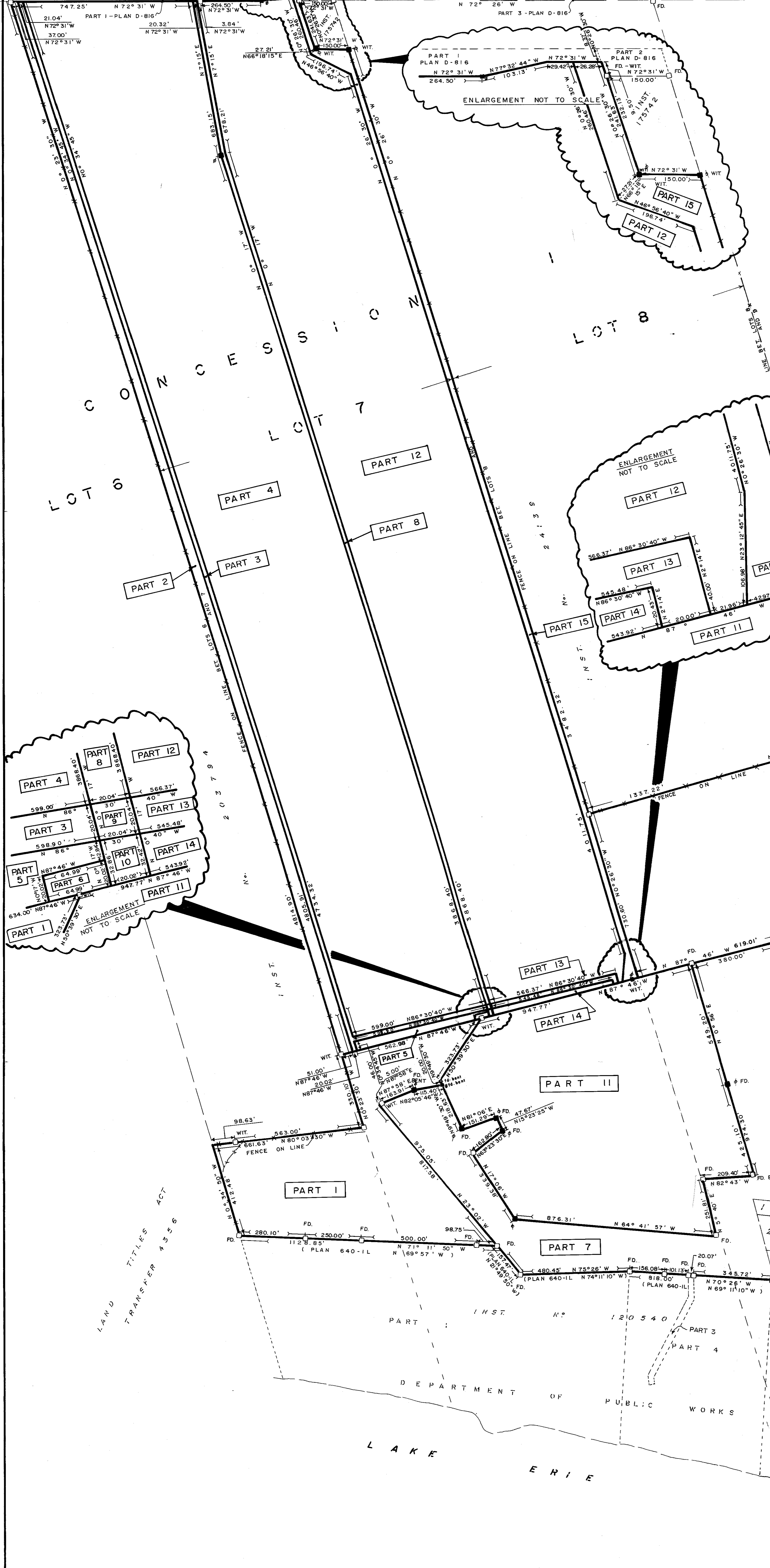


"CAUTION"

I REQUIRE THIS PLAN TO BE DEPOSITED UNDER THE REGISTRY ACT. DATE - FEBRUARY 22, 1980
 DONALD I. HOUGHTON
 DONALD I. HOUGHTON
 ONTARIO LAND SURVEYOR

PLAN IIR-2029
 RECEIVED AND DEPOSITED DATE - 21 FEB. 1980
 DEPUTY LAND REGISTRAR FOR THE REGISTRY DIVISION OF ELGIN, NO. II.

SCHEDULE				
PART	LOCATION	OWNER	INST. NO.	AREA
1	PART OF LOTS 6 AND 7, CON. I	WYNDEMERE FARMS LTD.	91761 AND 45058	13.404 AC.
2	PART OF LOT 7, CON. I	"	91761	4.756 AC.
3	PART OF LOT 7, CON. I	"	"	2.480 AC.
4	PART OF LOT 7, CON. I	"	"	65.851 AC.
5	PART OF LOT 7, CON. I	"	"	0.511 AC.
6	PART OF LOT 7, CON. I	"	"	0.030 AC.
7	PART OF LOTS 7 AND 8, CON. I, AND ALL OF LOTS 1, 2, 3, 4, 5 AND PART OF LOT 6 AND PART OF BLOCK A AND PART OF HATTIE AVE. REG. PLAN 228	"	"	21.344 AC.
8	PART OF LOT 7, CON. I	"	"	2.088 AC.
9	PART OF LOT 7, CON. I	"	"	0.009 AC.
10	PART OF LOT 7, CON. I	"	"	0.015 AC.
11	PART OF LOTS 7 AND 8, CON. I	PASSIONIST FATHERS OF DIOCESE OF LONDON	109467	25.479 AC.
12	PART OF LOT 7, CON. I	WYNDEMERE FARMS LTD.	91761	62.462 AC.
13	PART OF LOT 7, CON. I	"	"	0.269 AC.
14	PART OF LOT 7, CON. I	"	"	0.330 AC.
15	PART OF LOT 7, CON. I	"	"	2.816 AC.
16	PART OF LOT 8, CON. I - ALL OF LOTS 7 TO 19, INCLUSIVE, PART OF LOTS 6 AND 28, PART OF HATTIE AVE, WEST ST. AND GROVE ST., R.P. 228	"	"	50.229 AC.



SURVEYOR'S CERTIFICATE

I CERTIFY THAT -
 1. THIS SURVEY AND PLAN ARE CORRECT AND IN ACCORDANCE WITH THE SURVEYS ACT AND THE REGISTRY ACT AND THE REGULATIONS MADE THEREUNDER.
 2. THE SURVEY WAS COMPLETED ON THE 18TH DAY OF FEB., 1980.

FEB. 22, 1980
 ST. THOMAS, ONT.
 DONALD I. HOUGHTON
 ONTARIO LAND SURVEYOR

NOTES

ALL HANGING LINES SHOWN ON THIS PLAN HAVE BEEN VERIFIED.
 FD - DENOTES FOUND WIT. - DENOTES WITNESS
 ⊕ - DENOTES 1" x 1/2" x 4' 0" STANDARD IRON BAR
 ⊙ - DENOTES 3/4" ROUND IRON BAR
 BEARINGS ARE ASTROMERIC AND ARE REFERRED TO THE SOUTH LIMIT OF COUNTY ROAD 42 (N 72° 31' W) AS SHOWN ON PLAN D-816, REGISTERED IN THE LAND REGISTRY OFFICE FOR THE REGISTRY DIVISION OF ELGIN, NO. II.

PLAN OF SURVEY OF
 LOTS 1 TO 19, INCLUSIVE AND HATTIE AVENUE
 AND PART OF
 LOT 28, BLOCK A, WEST ST. AND GROVE ST.
 REG. PLAN 228
 AND PART OF
 LOTS 6, 7 AND 8 - CONCESSION I
 TOWNSHIP OF BAYHAM
 COUNTY OF ELGIN
 SCALE 1" = 200'
 1980

